

EASY TO INSTALL / ENOSTAVNA VGRADNJA



SYSTEM
2



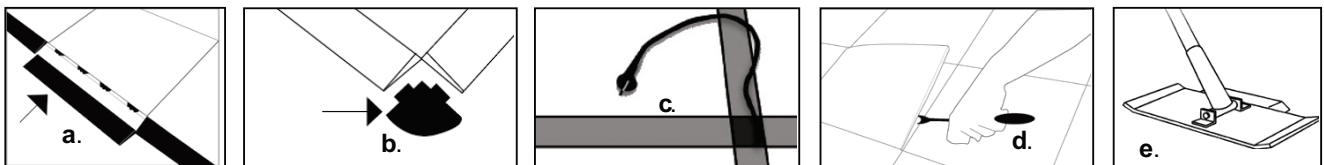
GB There is no need for either glue or special tools when laying your new Bergo floor. All you need is a rubber mallet and perhaps a yardstick and a saw.

1. Start in a corner: see the picture. Remember always to turn the protruding rings in the same direction (forwards).
 2. Fix the tiles with the connection taps over the protruding rings and fit them together with sharp strokes of a rubber mallet.
 3. Completed.
- A. Remember, before you install the flooring: Let the floor tiles remain few hours in the room where the floor should be installed, so that they have the same temperature. To make sure it functions well, always install a Bergo floor on a clean, hard and even surface. Allow a certain distance from walls, doorsteps etc. if the flooring is likely to be exposed to varying temperatures.
- B. Remember, if you need to trim the tiles to size: The tiles can easily be cut with a jigsaw or the like.
- C. If you want to conceal cables: Cable strip. A practical accessory for System 2 for hiding your cables (up to 6 mm). Can also be used just for decoration.
- D. If you want nice edges in open spaces: Edge strip and Corner Strip. A neat, practical edging for your Bergo floor System 2.

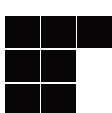
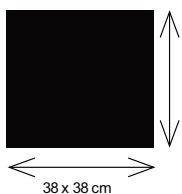
SLO Pri polaganju Bergo tal ni potrebe po lepilih ali posebnih orodjih. Vse, kar potrebujete, je gumijasto kladivo in morda meter in žaga.

1. Začnite v kotu: glejte sliko. Ne pozabite vedno obračati štrleče zanke v isto smer (naprej).
 2. Pritrdite plošče s štrlečimi pritrdilnimi elementi v čepke in jih z udarci gumijastega kladiva spojite.
 3. Dokončano.
- A. Ne pozabite, preden namestite tla: pustite talne plošče stati nekaj ur v prostoru, kjer jih je treba namestiti, tako da se klimatizirajo. Da bi zagotovili dobro delovanje, vedno postavite Bergo tla na čisto, trdo in izravnano površino. Pustite določeno razdaljo od sten, pragov, itd., če bodo tla izpostavljena različnim temperaturam, zaradi raztezanja.
- B. Ne pozabite, kadar morate prevelike plošče obrezati, jih lahko preprosto z žago.
- C. Če želite prekriti kable: praktični pripomoček za System 2 za skrivanje vaših kablov (do 6 mm). Prav tako se lahko uporablja samo za dekoracijo (dilatacijske letve).
- D. Če želite lepe robove v odprtih prostorih: vogalniki. Ustrezen, praktičen vogalnik za vaš sistem Bergo 2.

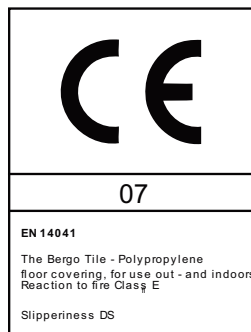
Accessories /



- a.** Edge strip / Zaključna letev
300 x 55 mm
- b.** Corner strip / Vogalnik
55 x 55 mm
- c.** Cable Strip / Dilatacijska letev
377 x 55 mm
- d.** Disassembly Tool Consumer / Št. art. orodje za razstavljanje za domačo rabo
Art. No. 20RT.
- e.** Disassembly Tool Professional / Št. art. orodje za razstavljanje za profesionalce.
Art. No. 18RT.



7 = 1 m² = 11 sq ft



Made in Sweden

